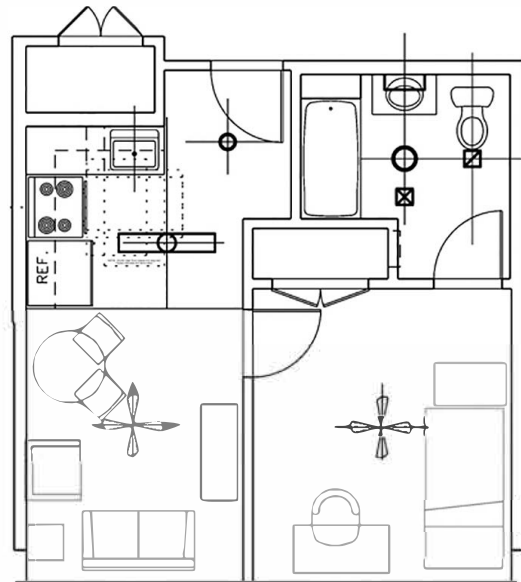


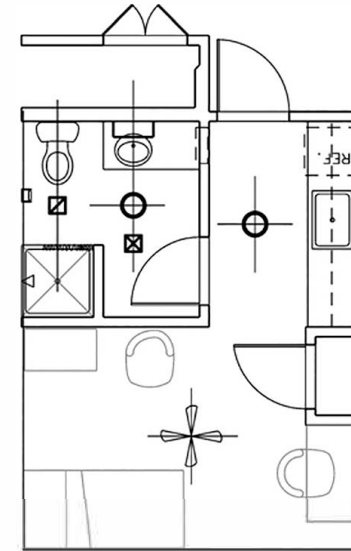
**1 bedroom apartment
with kitchenette:**

- kitchen 9'8" x 5'
- living area 11'8" x 9'4"
- bedroom 12'3" x 10'7"
- br closet 6'9" x 5'7"
- bathroom 8'5" x 6'4"



**1 bedroom apartment
with full kitchen:**

- kitchen 10' x 9'
- living area 11' x 9'
- bedroom 12'3" x 10'7"
- br closet 6'9" x 5'7"
- bathroom 8'5" x 6'4"



studio apartment:

- kitchen 8'10" x 4'
- living area 14'1" x 9'2"
- closet 6'9" x 3'3"
- bathroom 8'3" x 7'4"

Columbia Theological Seminary New Residence Hall for Students

Sample apartment floorplans. Configuration of individual apartments may vary. Estimated dimensions provided.